

BC Framer®



Boise Cascade
Engineered Wood Products

WELCOME

BC Framer® 8.3.1.215 General Release Webinar

Meet your presenter...



Daryl Simpson

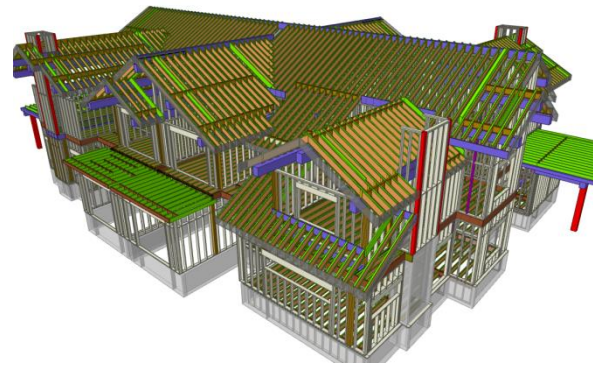
EWP Software Product Manager



Boise Cascade
Engineered Wood Products

BC Framer® General Release Webinar

- Agenda
 - BC Framer® New Features in 8.3.1.215
 - Review of issue resolutions and updates
 - Getting and Installing the New Version



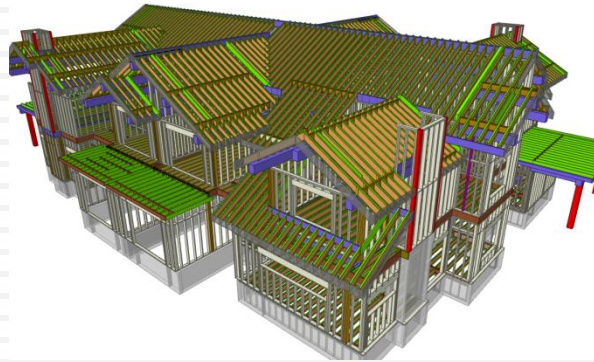
New Features for BC Frammer[®]

- Obround hole functionality
- Number of plys added at Search & View
- Search & View Column Filters

BC Framers[®] 8.3.1 – General Release

New Features

EXAMPLES





BC Framer[®] 8.3.1 General Release

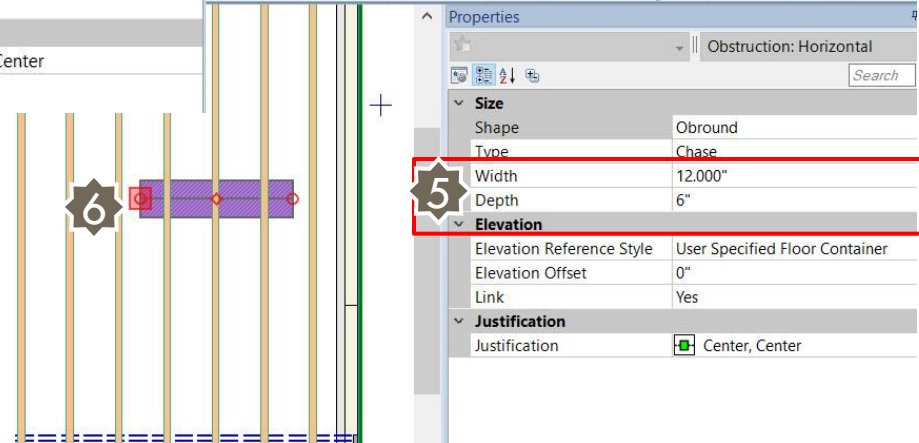
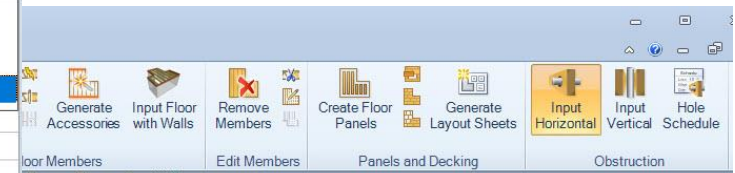
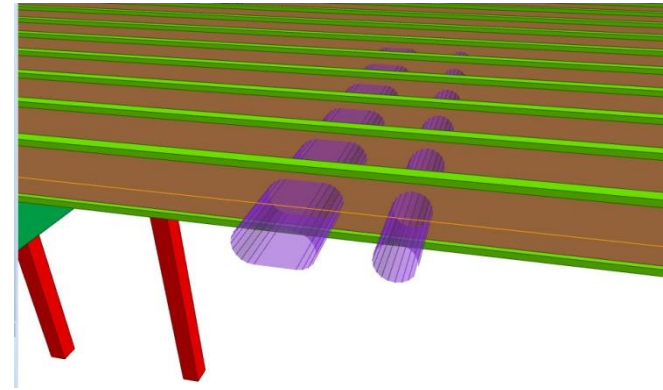
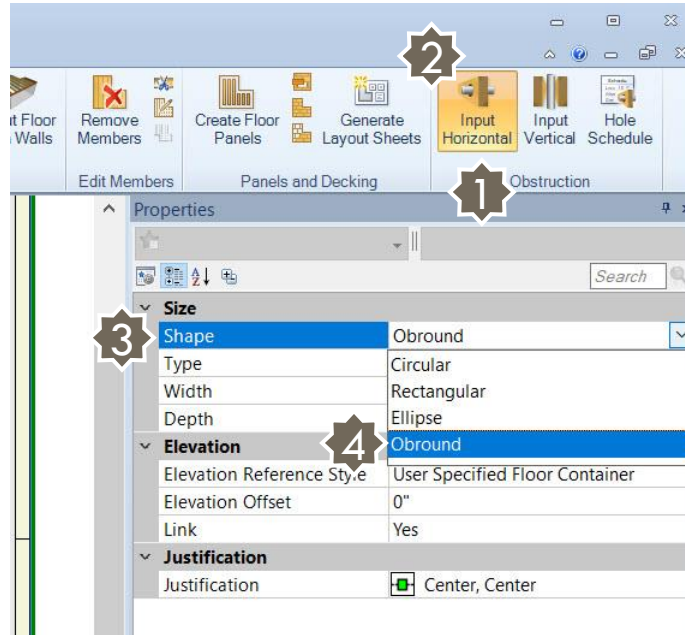
– New Features

☐ Obround Hole Functionality

1. Obstruction
2. Input Horizontal
3. Shape menu
4. Choose Obround
5. Set Width & Depth
6. Select Obstruction Start / End point

Note:

Width must be greater than Depth





BC Framer[®] 8.3.1 General Release

– New Features

- Number of Supported Member plys added at Search & View

1. Open Search and View Tab
2. Go to Connectors Tab
3. Adjust column width – expand Supported Member

Entity	Label	Layer	Level	Type	Product	Supporting Member (Ply)	Supported Member(s) (Ply)	Slope (Sup)
Connectors	Hu2	<Core>	1st Floor	Hangers	MIT414	BM1(i1793) 1-3/4" x 11-7/8" VE..	BM4(i1799) 1-3/4" x 14" VERSA-LAM@ 2.0 2800 DF (2 ply)	0°
Connectors	Hu2	<Core>	1st Floor	Hangers	MIT414	BM1(i1896) 1-3/4" x 11-7/8" VE..	BM4(i1799) 1-3/4" x 14" VERSA-LAM@ 2.0 2800 DF (2 ply)	0°
Connectors	Hu1	<Core>	1st Floor	Hangers	ITS2.37/11...	BM3(i1814) 1-3/4" x 14" VERSA...	FJ2(i1827) 11-7/8" BCI@ 6000-1.8 DF (1 ply)	0°
Connectors	Hu1	<Core>	1st Floor	Hangers	ITS2.37/11...	BM3(i1814) 1-3/4" x 14" VERSA...	FJ4(i1957) 11-7/8" BCI@ 6000-1.8 DF (1 ply)	0°
Connectors	Hu1	<Core>	1st Floor	Hangers	ITS2.37/11...	BM4(i1799) 1-3/4" x 14" VERSA...	FJ5(i1890) 11-7/8" BCI@ 6000-1.8 DF (1 ply)	0°
Connectors	Hu1	<Core>	1st Floor	Hangers	ITS2.37/11...	BM4(i1799) 1-3/4" x 14" VERSA...	FJ5(i1972) 11-7/8" BCI@ 6000-1.8 DF (1 ply)	0°
Connectors	Hu1	<Core>	1st Floor	Hangers	ITS2.37/11...	BM2(i1969) 1-3/4" x 11-7/8" VE..	FJ4(i1957) 11-7/8" BCI@ 6000-1.8 DF (1 ply)	0°
Connectors	Hu1	<Core>	1st Floor	Hangers	ITS2.37/11...	BM4(i1799) 1-3/4" x 14" VERSA...	FJ5(i1890) 11-7/8" BCI@ 6000-1.8 DF (1 ply)	0°

Boise Cascade
Engineered Wood Products

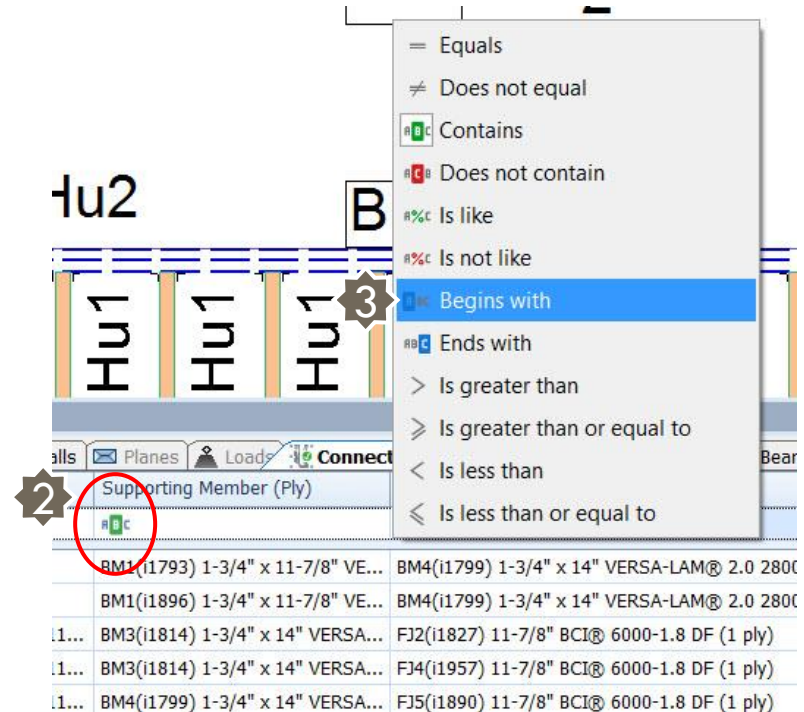


BC Framer[®] 8.3.1 General Release

– New Features

- Search & View Column Filters

1. Open Search and View Tab
2. Left click filter at top of column
3. Choose filter type
4. Enter filter detail

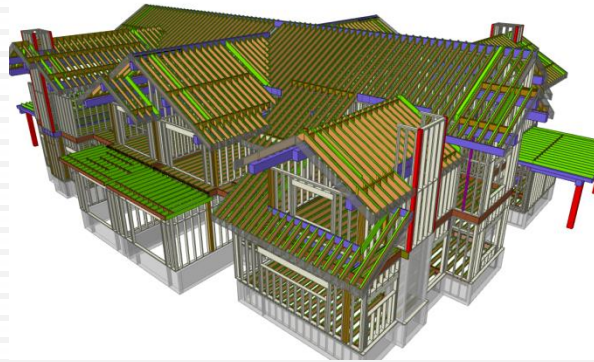


Level	Type	Product	Supporting Member (Ply)	Supported Member(s) (Ply)	Slo
=	=	#Bc	#Bc	#Bc B	#Bc
Basement	Hangers	N/A	BM2(i1981) 1-3/4" x 11-7/8" VE...	BM1(i2001) 1-3/4" x 11-7/8" VERSA-LAM® 2.0 2800 DF (3 ply)	0°
1st Floor	Hangers	MIT414	BM1(i1793) 1-3/4" x 11-7/8" VE...	BM4(i1799) 1-3/4" x 14" VERSA-LAM® 2.0 2800 DF (2 ply)	0°
1st Floor	Hangers	MIT414	BM1(i1896) 1-3/4" x 11-7/8" VE...	BM4(i1799) 1-3/4" x 14" VERSA-LAM® 2.0 2800 DF (2 ply)	0°

BC Framers[®] 8.3.1 – General Release

Software Improvements / Bug Fixes

EXAMPLES





BC Framer[®] 8.3.0 General Release

– Bug Fixes

Group label bug (introduced in 8.2.4)– if group labels are already created then edited (for example cutting a joist), the group labels are not updating. Bug is fixed for joist group label, but not yet for connector group labels.

Work-around is to simply un-group, then re-group.

Change to Truss Visibility in 3D (introduced in 8.2.4)–

Bottom chords are not visible when Truss is selected in 3D view.

If you are not upgrading to 8.3.1 yet, the group label and truss visibility bug fixes are in the following updates:

8.3.0 Update 7

8.2.4 Update 9

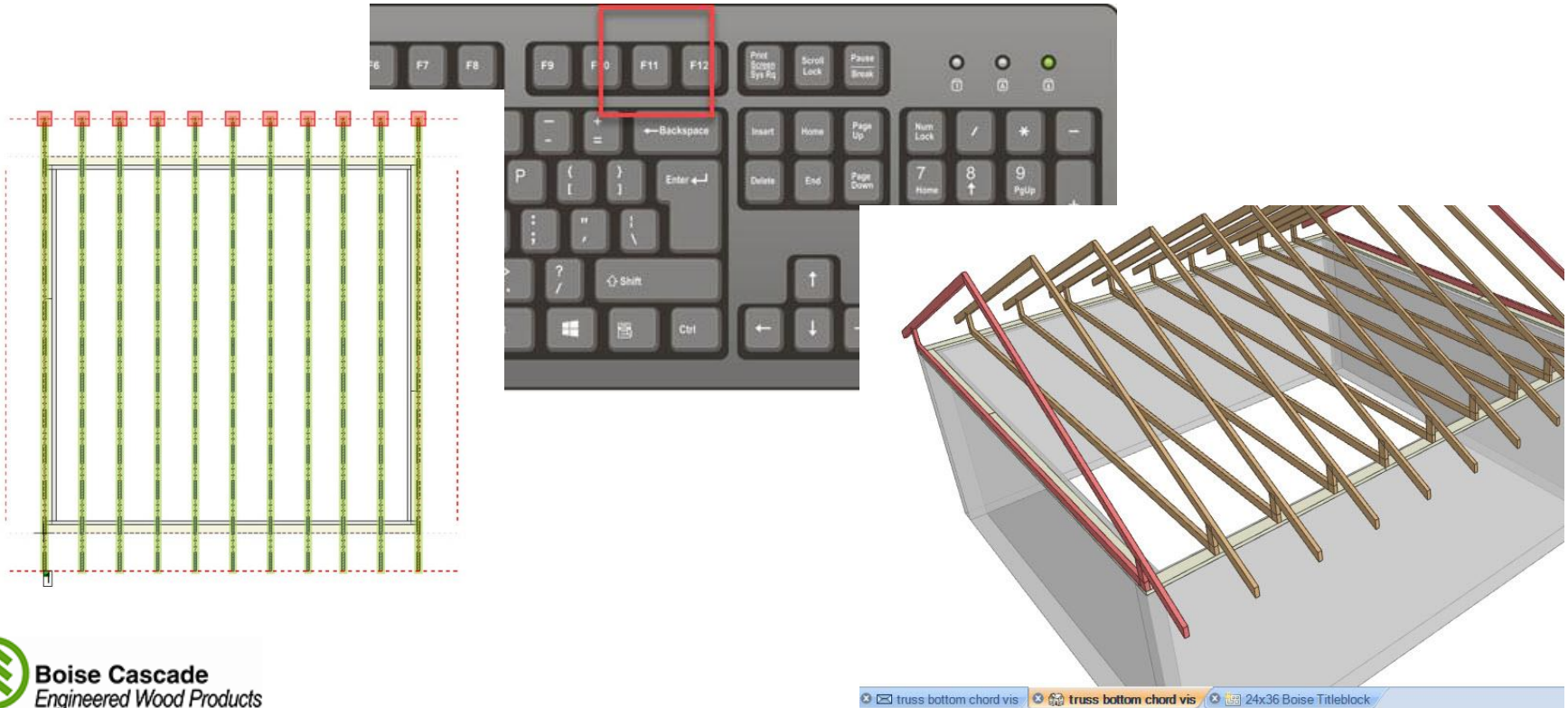




BC Framing[®] 8.3.0 General Release

– Bug Fixes

Additional note on restored functionality for truss visibility bug
Using F11 (Hotkey for 3D)
Goes to 3D & refreshes the truss chord view in one step





BC Framer[®] 8.3.0 General Release

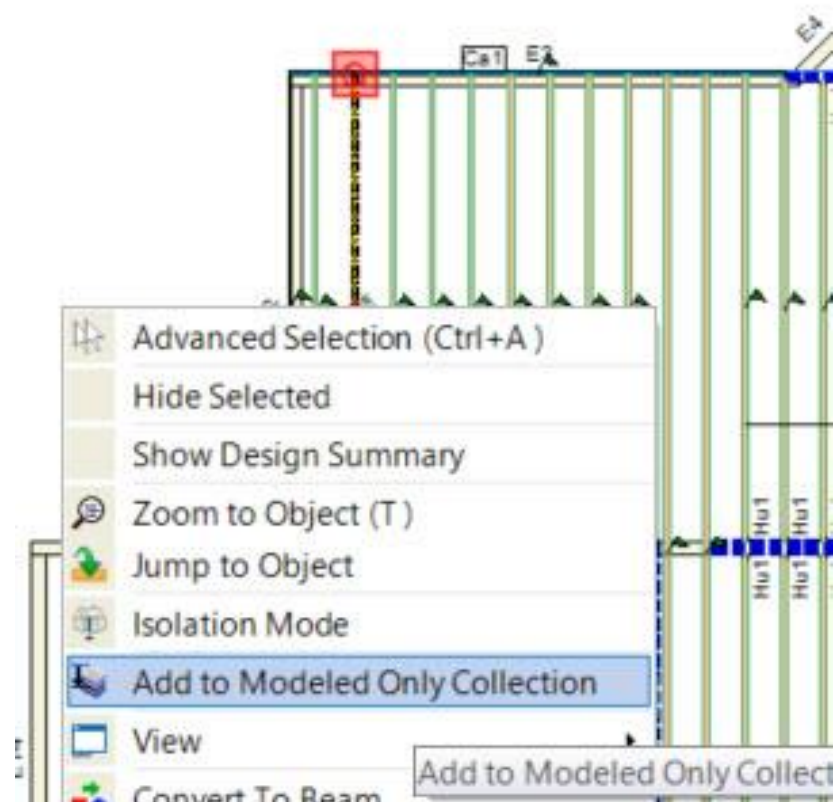
– Bug Fixes

Add to Modeled Only Collection bug (introduced in 8.2.3)

The command was lost & has been restored.

If you are not upgrading to 8.3.1 yet, the bug fix is in the following updates:

8.3.0 Update 7





BC Framer[®] 8.3.1 General Release

– Installing the NEW VERSION

- Request a download link from the webinar reminder email.
 - Check your local server if your Corporate IT group provides install files for you
- Flash drives available on request.

Installing the Software

- Upgrading an existing version
 - Double click on the install file, the upgrade will run without further action
 - Database settings will be retained while new features or products are added
- New Install
 - Process is identical to previous versions

**Upgrade Support Version
8.1.2 & later**





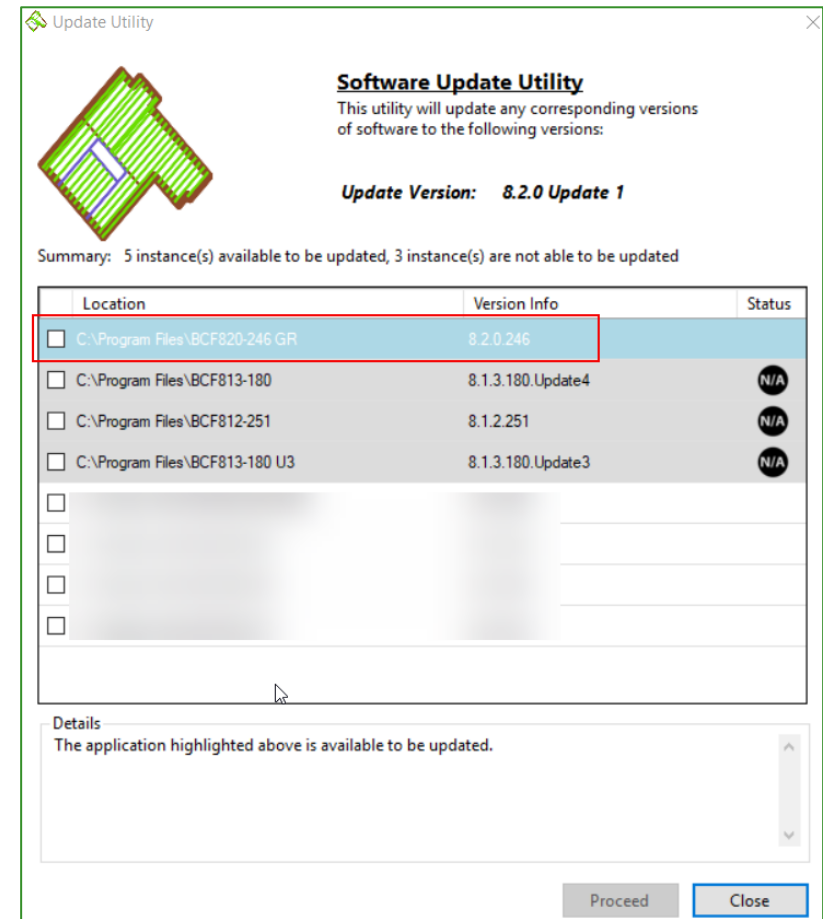
BC Framer[®] 8.3.1 General Release – Installing the NEW VERSION

□ Installing Update X

1. Double click on the update.exe file

8.3.1 UpdateX.BCF.exe

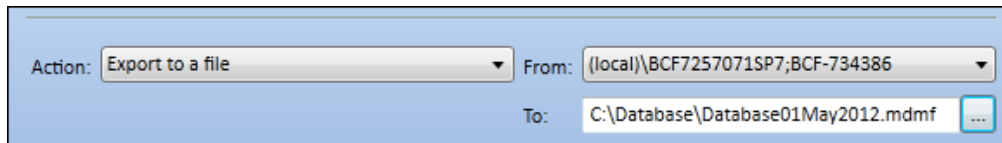
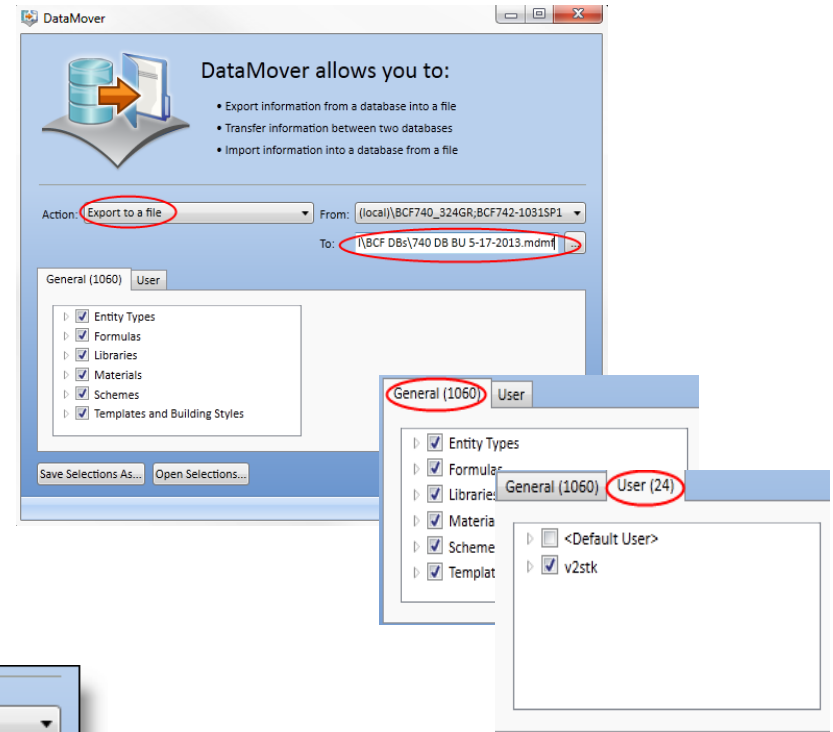
2. BC Framer[®] installs eligible for the update will be displayed.
3. Check mark the version to update.
4. Click the Proceed button.





BC Framer[®] 8.3.1 General Release – Backing up the Database

- Backing up your current database is recommended. BUT do not import this back up into your new install.
- If you wish to back up your database prior to upgrading
 - Use DataMover to export a file
 - Interested??? Find full instructions on using Datamover at:
 - <https://bc.ewpsupport.com/hc/en-us/articles/360002156291-How-do-I-back-up-my-FRAMER-database-Current->



NOTE: The backup file **should NOT be imported into your 8.3.1 database.** It is to be used only in the unlikely event of data corruption.

BC EWP Software Support



Questions?

For more information on BC FRAMER[®] please contact Boise Cascade at

800-405-5969 or EWPSupport@bc.com

Visit us at: <https://bc.ewpsupport.com>